

SOUTH WAIRARAPA BRIDGE CLUB



#4 NEWSLETTER MAY 2017

Thanks to the SWBC Committee, Martin Connelly, Greg and Sue Whitten for help in compiling this newsletter.

Hi Everybody

We have changed the date we are going to publish the newsletter (so that is why you are getting two in May) – from now on we will email it the week after the committee meeting, so that you will know what is happening and what decisions have been made.

At our May Committee Meeting

- Treasurers report – The tournament profit was \$67.50, which includes a profit of \$113.00 from the raffle. Closing Balance Current account \$7083.33, Term deposit \$20.000. Alan reported that Table money is still very up and down – last Monday over by \$20.00, this Monday under by \$15.00 – over the month the overpayment was \$8.50
- Gail Rapson was co opted on to the committee and is now leading the ongoing negotiations with the lease renewal. Gail has extensive expertise in this field.
- Gail and Gareth are also the supper co ordinators. This involves weekly purchases of all supper items, and the task of rostering people to do supper duty each month (setting up and clearing) – their plea is if you are not doing anything else for the club please make yourself available for this small (but very important, especially if you have supper) duty
- Andrew is now the Vice President until the AGM in February
- We had a vote on cancelling the Mid winter Christmas Dinner which was won by the majority. It has been replaced by the “Mid Winter Individual”

When the club was started 20 or so years ago it was a small group and the two social occasions were the mid winter Christmas dinner and the Christmas Party – now the club has a membership over 110 and on our calendar we have two big tournaments, the Babich pairs, the visit from Masterton and the Christmas Party, which all require a lot of time and organisation. It was felt that there was enough social occasions during the year and it was not necessary to hold the Mid Winter Christmas Dinner

- We had a vote on not including travellers on the back of the boards which was won by the majority.

The dealing is done by Jill and she has expressed concern on how long it takes to insert the travellers in the boards. She deals one month of games in a single dealing session, and has a team to help get it done in reasonable time. Before she starts she has to make sure that it is Ok with librarians to use our bridge rooms, set up the dealing machine, download the boards and then deal them. After the boards are dealt, she is able to print out the travellers and the hand records. The actual dealing is very quick – only about 6 or 7 seconds – it actually takes longer to fold the travellers and insert them in the boards than to deal them. The travellers are now bring printed and kept in the box with the boards, so if there is any emergency with the Bridge Pads, or if the director needs to check on a specific hand, they are still available. The hand records are available at the end of play as usual

Pianola has all the travellers and hand records, so as soon as you get the email with your results you can check everything out.

- Members are to take responsibility for their own tournament entries.

There are tournament flyers on the notice board and also on our website, but they are for your information only. If you want to enter a tournament you need to contact the tournament secretary with your names and computer numbers. All clubs are happy to take payment on the day of the tournament (unless stated otherwise on their flyer) and some of them are happy for you to pay online.

Also it is important to know that if you enter a tournament you are expected to be there. It is very disappointing and disruptive for a tournament committee if people just don't turn up.

- Results of play and ladders are now on BridgeNZ
- Interclub petrol funding – The Club pays \$30 each month for each team that drives to Wellington to play interclub. The treasurer has given a cheque to cover this expense to each team captain, who will in turn reimburse the driver each month
- Katherine (me) is now the Thursday convenor. My phone # is 0272433495 – phone or text me - and my email is goughgirl@gmail.com – get in touch if you need help in finding a partner for Thursday.

***X Club** has been going now for a couple of weeks – after each game you can receive an email telling you how you and your partner fared against hundreds of other pairs. X Clubs email tells you what was your best board, your worst board and the” most interesting “board you played –* 'most interesting' means the hand with the greatest variety of contract and/or declarer. – for us on Monday night Board 9 was most interesting – both E/W or N/S could get the contract and the bids ranged from 2H to 6SX. If you want an X Clubs email just let me know and I will add you to the list goughgirl@gmail.com*

Bridge Golden Rule #3 – Make sure you are seated ready to play at 5.50. The reason this club rule is important is that after everyone is seated we can collect the table money, the director and scorer can work together to check the number of tables, agree on how many boards will be played ,hand out the boards and start the bridge pads

• **Beginners and Improvers Lessons**

- This year the Club will be running two sets of lessons over 10 Tuesday nights, 25th July to 26th September
- Teachers are Greg and Sue Whitten
- The beginner lessons will use the NZCBA lesson modules found on the NZCBA website
- The Acol system will be taught. The lessons will run from 7pm to around 8.45 pm.
- Fee for Beginners class is \$40. Anyone who is now playing at the club, but fees I they would benefit from attending more Beginners lessons, you are also welcome to attend. The fee for club members to attend is \$2.00 per lesson



Improver Lessons

- The improver lessons will be on the same nights and will run from 5.45pm to 6.45pm.
- The lessons will reference both 4 card majors (Acol) and 5 card majors (Standard American).
- The improver lessons will be interactive, attendees need to have attended Beginners Lessons previously and will be given a quiz to take home and complete.
- Greg thinks this course will benefit keen people who have been in the club for a while and now feel they want to learn more.....
- The cost of these lessons is \$2.00 per lesson. Greg has given us a complete lesson plan which is on the website
- All this information is on our website, plus photos and a full lesson plan
- <http://www.southwairarapabridge.org.nz/lessons-for-beginners-and-improvers>
- You can enroll in the lessons by sending an email to our Secretary Kath Banks swbridge@xtra.co.nz or ringing her at 06 3774738

At this stage we have no confirmed names for either classes – our advertising will be in Grapevine, Marlborough Star, Featherston Phoenix and Carterton Crier, link on our website, flyers in key places in each town (members will be asked for help with these) and shoulder tapping of interested friends and family – personal; approach is always good –

Lizzie would like each member of the club to get one person to come to classes!!

The life blood of our club are the learners and beginners – last year we had 29 people start the class but only 5 have joined the club this year. We have plans to have a better retention rate this year, but first of all we need gorgeous willing pupils!!



I was cleaning up the attic the other day and I came across an old lamp. I started polishing it and out popped this genie. "I will grant you one wish," said the genie. So I found a map of the world and gave it to the genie and said, "Do you see all these countries? Well, I wish you could make them all live in peace and harmony." "Are you kidding?" said the genie. "I can't do all that. I am only a genie." "OK." I said. "Well, then I wish you could make me a really good bridge player." "Hmnm," the genie replied. "Ok . . . Katherine, let's see that map again . . ."

Congratulations to us on a very successful visit from Masteron Bridge Club.

Right from the start it was perfect – everyone arrived with a smile, the food was awesome and the bridge was fun

The next day Lizzie received this email from Liz Waddington

Hi Lizzie

What a wonderful night we had last night. A room, packed to the gunnels, with everyone happy and enjoying themselves. The room ran very efficiently thanks to you, and Greg and the other directors.

The meal. Well what can I say about the meal! Such delicious scrumptious plates of goodies, and more than enough for supper as well!

It is such fun to see and feel the camaraderie between our clubs. We will look forward to the return visit in July.

Our very best from Masterton Bridge Club

Liz

Secretary



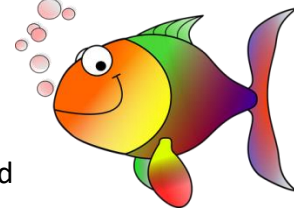
Keep the 11th July Free – so we can have a great return visit with our friends



On the 4th May Angie and Martin arranged a teaching session on using the Bridge Pads. They went to Lizzie's home and it was a very informative afternoon. Everything is easy when you know how!!

Thursday Night Teams start on the 8th June There will be list on the notice board for the teams, so add your names now. The theme for this year's teams is **Fish** If possible please arrange your own substitutes if you know you are going to be away.

We will also need a list of **"free rangers"** so if you don't belong to a team and you would love to play, write down your name on the free rangers list. I was in this situation last year and I actually played every week – always in a different team



Greg's Monthly column (another topical subject from Greg)

THE APPEAL PROCESS



Directors can't be expected to get rulings correct on every occasion. There are sometimes issues relating to contested facts around what has happened at the table, or opinion as to whether the rules of the game have been interpreted correctly. These issues occur during the hustle and bustle of play when a Director must quickly come to a view as to what has actually happened at a table and then apply the appropriate law. Often time constraints come into play especially when the Director is also playing. The Director is always encouraged to keep play moving.

The Rules that govern our game provide for a procedure to appeal a Director's ruling. This is a safe guard that Directors welcome. There have been many occasions where I have reviewed decisions I have made at the table after the event, and have sought the advice of more experienced Directors to check on my rulings. Like the process of learning to play the game, Directors are also learning as they go along. The New Zealand Bridge Association also provides a forum for us to seek the views of other Directors regarding any unusual occurrences that we have had to rule on.

At our Club, your Committee has appointed an Appeals Committee. Should you feel that your Director has misunderstood an action, or has applied the Laws of the game incorrectly at your table, you are entitled to state to the Director that you wish to appeal that decision. In fact, the faster we get to this stage, the faster we can return to the game, in the knowledge that any outstanding matter can be reviewed later.

On a Club night, it is expected that any appeal should be lodged, if not at the time the Director is at the table, then within ten minutes of the evening's play finishing. At tournaments, the New Zealand Association has defined that appeals must be lodged within thirty minutes of a session finishing. For an appeal to proceed both members of a partnership must agree to the appeal. At an Appeal Committee hearing the Committee will hear from both sides as to what they believe happened and will hear from the Director solely relating to the Law or regulations. Interestingly, the Committee is not entitled to overrule the Director on a point of law, or on the exercise of disciplinary powers, although in practice the issues around the laws will clearly be debated. Further there is a rule (93) that allows disgruntled appellants the right to seek a review by the Laws and Regulations Committee of the New Zealand Board of any Appeals Committee decision, although my understanding is that this is rather frowned upon.

Greg Whitten May 2017